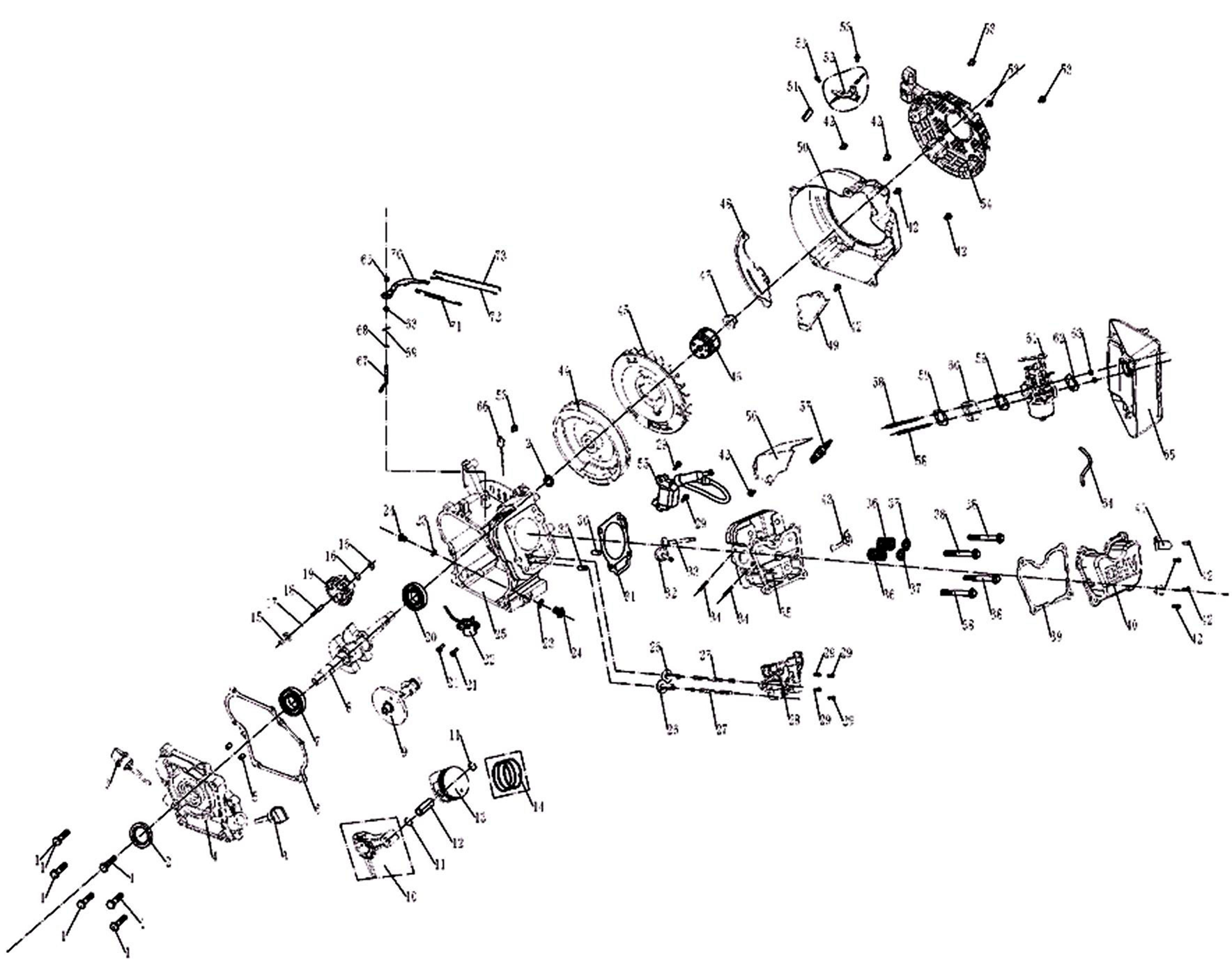


## GG1300+DC

No.:02204000026

NO.	CODE	DESCRIPTION	QTY.	REMARK
1	01201000031	UP154 engine	1	
2	029030200202	160 front end cover	1	
3	062014420002	Rotor	1	
4	062014430030	Stator	1	
5	029030100100	Alternator guard board	1	
6	029030400205	160 rear end cover	1	
7	029030610202	3kw AVR	1	
8	029030300203	160 rear end cover guard	1	
9	029910300201	2# shock absorption	2	
10	029910300101	1# shock absorption	2	
11	029049910100	Muffler gasket	1	
12	029040200010	Muffler	1	
13	029019901101	Fuel tank cap	1	
14	029019900602	Fuel tank filter	1	
15	029010100105	Fuel tank	1	
16	029019900701	Fuel switch	1	
17	022040800001	Cradle	1	
18	029940100901	Muffler protect side guard	1	
19	029940101001	Muffler protect outside guard	1	
20	029030700100	Carbon brush	1	
21	029930000801	Earth wire	1	
22	029020100004	Control pannel	1	
23	511050801601	Bolt M8X16	2	
24	512040800001	Nut M8	8	
25	513010800001	Washer 8	6	
26	513020800002	Spring washer 8	7	
27	511050802001	Bolt M8X20	4	
28	513020600002	Spring washer 6	5	
29	511050610501	Bolt M6X105	4	
30	513040800006	Big washer 8	1	
31	511010818001	Bolt M8X180	1	
32	513030500000	Tooth washer 5	2	
33	513010500001	Washer 5	2	
34	513020500000	Spring washer 5	2	
35	511050501601	Bolt M5X16	5	
36	511050501201	Bolt M5X12	2	
37	511050601201	Bolt M6X12	16	
38	512040600001	Nut M6	15	
39	513010600001	Washer 6	9	
40	513030600000	Tooth washer 6	1	



## UP154-31 engine spare parts list

**NO.:01201000031**

NO.	CODE	DESCRIPTION	QTY.	REMARK
1	511050602501	Bolt M6*25	6	
2	522010100201	Oil seal	2	
3	012010200000	Oil dipstick	2	
4	012010000500	Crankcase cover	1	
5	514010801200	Pin 8*12	2	
6	012010000600	Crankcase cover gasket	1	
7	521010010801	Bearing 60000 17	1	
8	012010700003	Crank shaft V2	1	
9	012010800000	Carn shaft	1	
10	012010600000	Connect rod assy	1	
11	518041400000	Piston pin circlip	2	
12	012010001900	Piston pin	1	
13	012010001800	Piston	1	
14	012010500000	Piston ring set	1	
15	012010000400	Speed governing push dish	1	
16	019990000600	Speed swinging rod washer	2	
17	518030600000	Retaining ring	1	
18	012010000300	Speed governing shaft	1	
19	012010100000	Speed governing gear	1	
20	521010010701	Bearing 60000 17	1	
21	515010601603	Bolt M6*16	2	
22	012011400000	Oil sensor assy	1	
23	019990000400	Oil drain Bolt gaskets	2	
24	019990000300	Oil drain bolt M10*15	2	
25	012010000100	Crank case	1	
26	012010001500	Valve tappet	2	
27	012010001600	Valve lifter	2	
28	012010400000	Valve rocket assy	1	
29	511130601801	Bolt M6*18	6	
30	514010801600	Pin 8*16	2	
31	012010001200	Cylinder cover head gasket	1	
32	012010001300	Outlet valve	1	
33	012010001400	Intel valve	1	
34	516040803401	studs M8*55	2	
35	012010001100	Cylinder cover head	1	
36	012010000900	Valve spring	2	
37	012010000800	Valve spring seat	2	
38	511050805001	Bolt M8*50	4	
39	012010000700	Cylinder head cover gasket	1	
40	012010300000	Cylinder head cover	1	
41	012010003000	Ignition coil plate	1	
42	511050601201	Bolt M6*12	10	

43	012010001000	Oil baffle	1
44	012010002000	Fly wheel assy	1
45	012010002100	Fly wheel fan	1
46	012010002200	Starting flange	1
47	012010002300	Fly wheel nut	1
48	012010002500	Air gover	1
49	012010002600	Air gover	1
50	012010002404	Wind hood	1
51	012010004700	Rubber block	1
52	012011200002	Governor	1
53	511050600801	Bolt M6*8	6
54	012011300003	Recoil starter	1
55	012010002700	Ignition coil	1
56	012010001700	Lead wind cover	1
57	012010002800	Spark plug	1
58	516040609101	Studs M6*91	2
59	012010004000	Carburator gasket	2
60	012010003900	Carburator cushion block	1
61	012011100000	Carburator	1
62	012010004100	Air cleaner gasket	1
63	512040600001	Nut M6	4
64	019990000500	Breathing tube	1
65	012011000000	Air cleaner assy	1
66	019990001700	Diode	1
67	012010000200	Speed swinging rod	1
68	012010004600	Speed swinging rod washer	1
69	019990000700	Clip	1
70	012010004500	Speed governing arm	1
71	012010004201	Speed governing spring	1
72	012010004300	throttle reset spring	1
73	012010004400	Speed governing pull rod	1