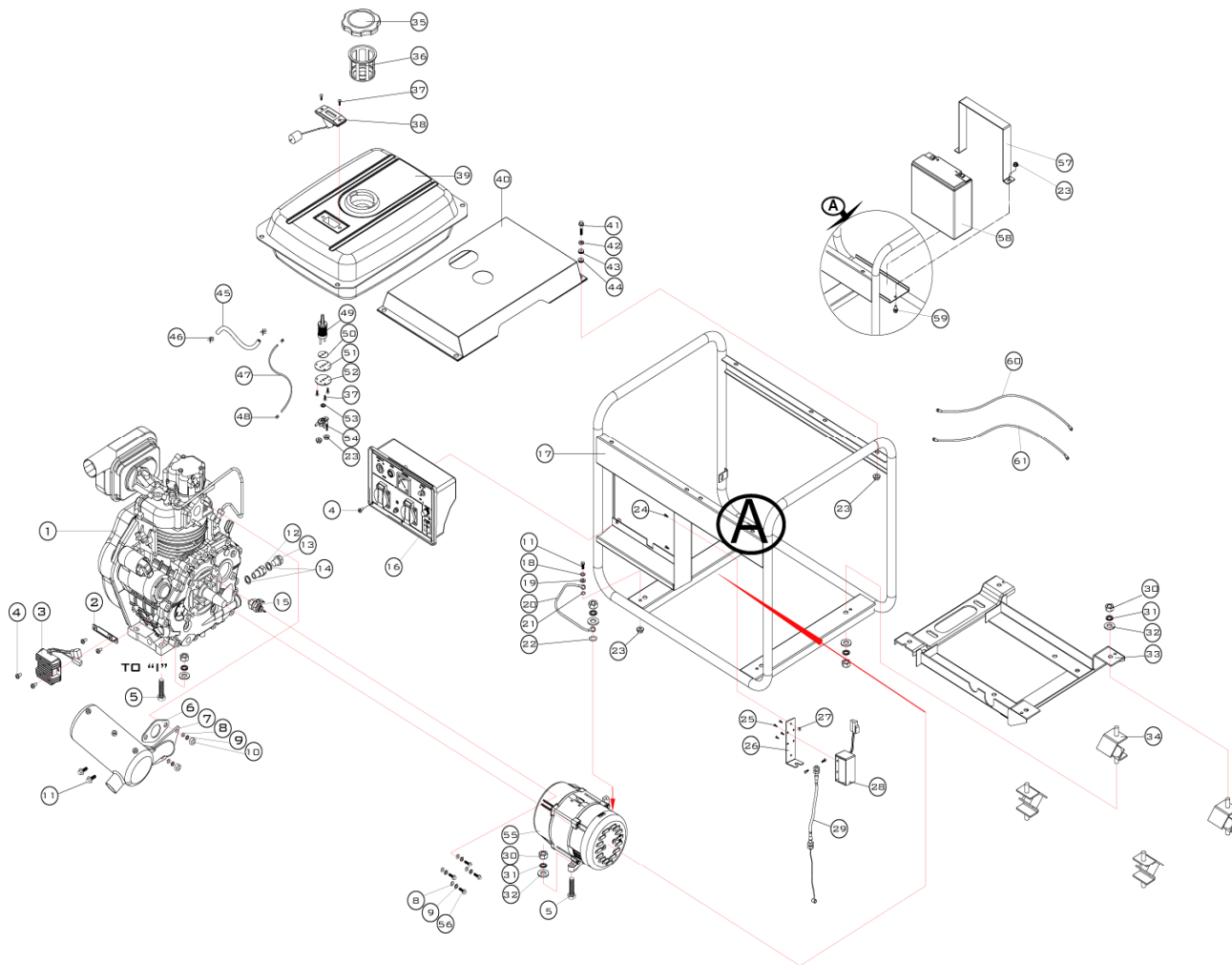


DG2200E+B



	CODE	DESCRIPTION	DESCRIPTION	QTY.	MARK
1	2ED2204		UD170 diesel engine	1	
2	3C61010		Regulator stay	1	
3	3C61009		Regulator	1	
4	3S27060122		Screw M6*12	8	
5	3S21100401		Bolt M10×40	6	
6	3B0103005		Muffler washer	1	
7	3C2223001		muffler	1	
8	3S35081		washer Φ8	6	
9	3S31082		spring washer Φ8	6	
10	3S13081		Nut M8	2	
11	3S22060141		Bolt M6×14	3	
12	3C61006		pipe joint	1	
13	3B0101001		Drain plug	1	
14	3B0101002		washer	2	
15	3C61004		oil pressure alarm	1	
16	3MDG22		panel assy	1	
17	3JDG22L		Frame	1	
18	3S31062		spring washer Φ6	1	
19	3S35061		washer Φ6	1	
20	3C5230003		Grounding wire 15CM	1	
21	3S39061		gasket Φ6	1	
22	3S31103		gasket Φ10	1	
23	3S13061		Nut M6	11	
24	3S27040082		Screw M4*8	4	
25	3S28030082		Screw M3*8	4	
26	3C61008			1	
27	3S11042		Nut M4	2	
28	3C61007			1	
29	3C61001			1	
30	3S11101		Nut M10	14	
31	3S31102		spring washer Φ10	14	
32	3S35101		washer Φ10	14	
33	3JPJ05001		combined foundation	1	
34	3C3106		shock absorber	4	
35	3C13004		fuel tank cup assem	1	
36	3C19009		filter cup	1	

37	3S27050082		Screw M5*08	5	
38	3C13001		fuel marker	1	
39	3C1212		fuel tank	1	
40	3C1401		cover board	1	
41	3S22060251		Bolt M6*25	8	
42	3S3606118		washer Ø6	8	
43	3B0201028		Shock absorber	8	
44	3B0201027		Air gover collar	8	
45	3B0111014		Fuel pipe	1	
46	3B0111013		Clamp	2	
47	3B0111007		Fuel retum pipe	1	
48	3B0111006		Clamp	2	
49	3B0111016		Filter element assem	1	
50	3B0111015		Fuel filter gasket	1	
51	3C13013		connection gasket B	1	
52	3C13011		connection board	1	
53	3B0111012		O-ring 13.2×1.8	1	
54	3B0111011		Fuel tank cock assem	1	
55	11020		alternator assem Ø190*80	1	
56	3S22080251		Bolt M8*25	4	
57	3JP01005		Fixation of power supply	1	
58	3C5120012		Battery 20AH	1	
59	3S22060121		Bolt M6*12	2	
60	3C5210500			1	
61	3C5220500			1	